

# CLEVELAND ELEMENTARY School

Addition & Renovation  
NJSDA & NJDOE Project

Presented by:  
Adekunle James, BA/Board Secretary

## CLEVELAND ELM SCHOOL New Construction/Addition

- Multipurpose room (4,800 sq.) with stage (1,200 sq.)
- Prep Kitchen w/ server (1,200 sq.)
- Main Entrance Lobby and Security Post
- Boys & Girls Rest Rooms – 3 floors

# CLEVELAND ELM SCHOOL

## **Program-Driven Renovations**

- **Provision of child study team office space**
- **Provision of small group instruction space**
- **Provision of a toilet room for the nurse's office**
- **Provision of a staff toilet on each floor of the facility**
- **Provision of an Art/Science Project Lab in lieu of separate Art and Science spaces**
- **Replacement of one Grade 6 Classroom with a Science Lab (incl. support)**
- **Provision of one self-contained special education classroom**
- **Provision of custodial and building support space as feasible**

# CLEVELAND ELM. SCHOOL Renovations Cont.

## *Exterior*

- **Replace existing EPDM roof**
- **Limited masonry repointing**
- **Lower level water infiltration and exterior grading**
- **Roof downspout discharge and site drainage**
- **Fencing**
- **Parking Lot Repair**

## CLEVELAND ELM. SCHOOL Renovations Cont.

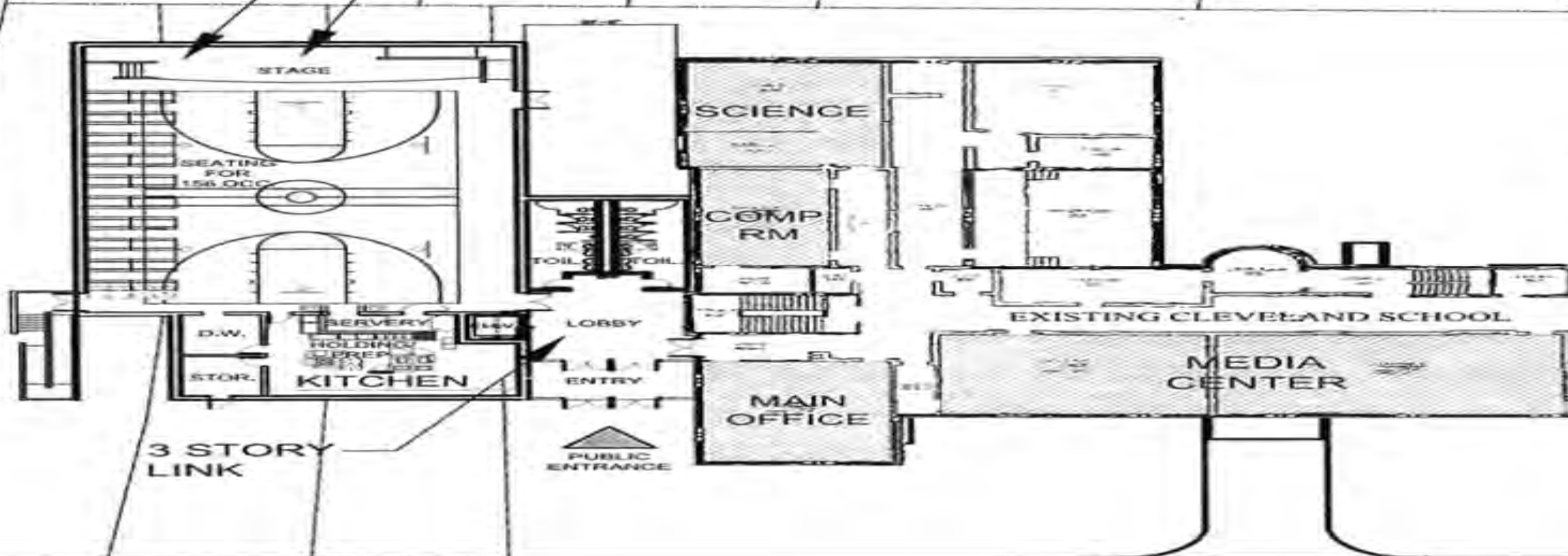
### *Interior*

- **Remove & replace entire HVAC system and controls**
- **Install Fire sprinkler system**
- **Staircase handrails & guard rails**
- **New suspended ceiling grid w/ 2x2 tiles in 1<sup>st</sup> & 2<sup>nd</sup> floor corridors**
- **New VCT flooring (over existing) in 1<sup>st</sup> and 2<sup>nd</sup> floor corridors**
- **New recessed light fixtures in 1<sup>st</sup> & 2<sup>nd</sup> floor corridors**
- **Repair inoperable windows**
- **Replace door hardware**

# Facilities Conditions Requiring Further Investigation

- **Electrical Service Upgrade**
- **Fire Alarm System**
- **Intercom System**
- **Security Camera System**

1 STORY  
ADDITION  
11,420 SF  
MULTI-PURPOSE  
ROOM 5,320 SF

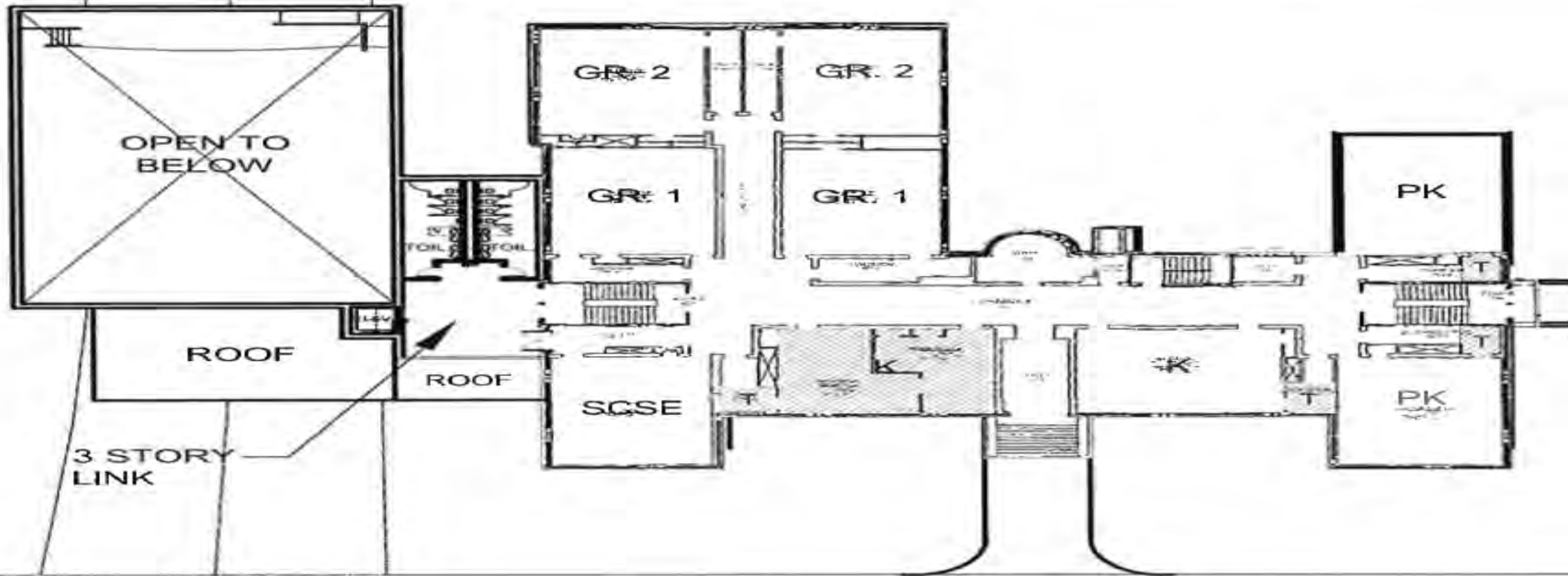


3 STORY  
LINK

CLEVELAND ST.

LOWER LEVEL FLOOR PLAN

CLEVELAND E.S. SITE PLAN

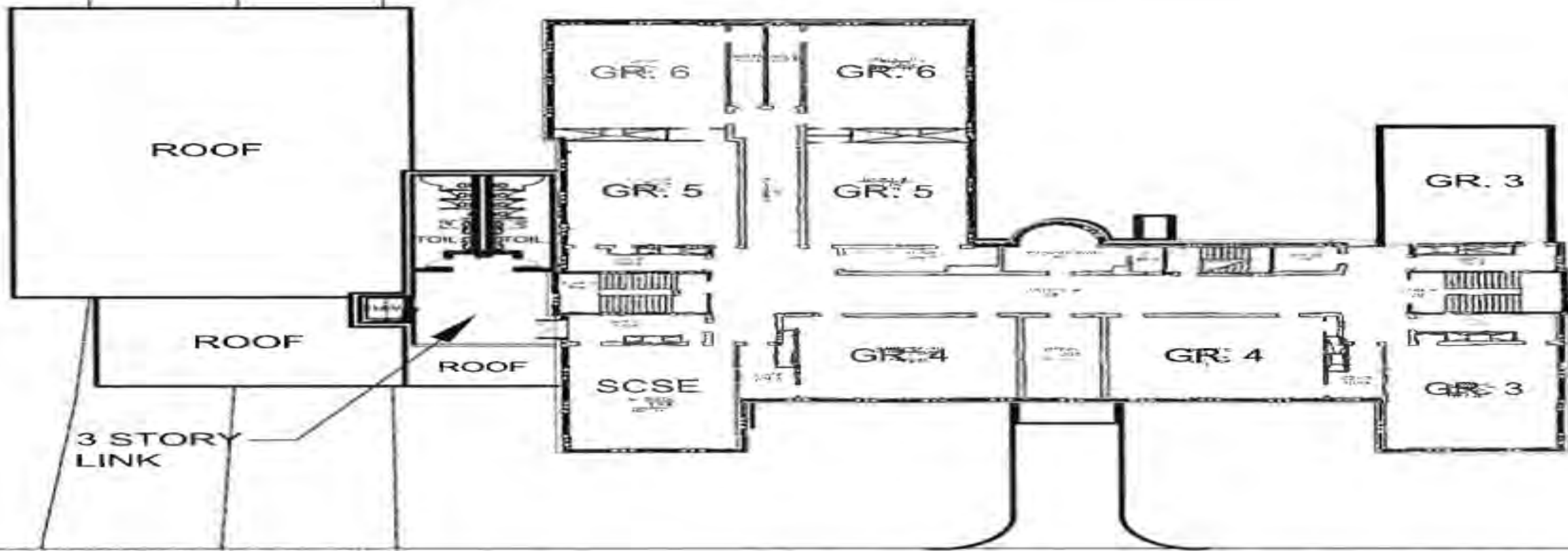


CLEVELAND ST.

① FIRST FLOOR PLAN

**CLEVELAND E.S. SITE PLAN**





SECOND FLOOR PLAN

CLEVELAND ST.



CLEVELAND E.S. SITE PLAN



CLEVELAND

STREET

ELF



CLEVELAND STREET ELEMENTARY SCHOOL

CLEVELAND STREET  
ELEMENTARY SCHOOL

## CLEVELAND ELM SCHOOL New Construction/Addition Completion Timeline

- **Current Status: as per NJSDA**
- Cleveland Street School Project was awarded to Brockwell & Carrington Contractors (BCC) as the General Contractor.
- The Construction Manager is Epic Management.
- Abatement & Selective demolition of the existing facility was completed in May 2019
- Construction is scheduled to begin in January 2020.
- Completion and anticipated District occupancy is September 2021.